

PRODUCT DATA SHEET

Page 1 / 4

LPS from *S. typhimurium* (S-form) TLRpure™ Sterile Solution

Cat. No.: IAX-100-011

Lot. No.:

| | |
|----------------------------|--|
| Source | Lipopolysaccharide (LPS) from <i>Salmonella typhimurium</i> , S-type (smooth/wild-type) LPS |
| Concentration | 1mg/ml stabilised in sterile, double-distilled water (ddWater), without any additives |
| TLRpure™ | No detectable TLR4 <i>independent</i> activity; standardised potent TLR4-specific agonist |
| Purity | Ultrapure. No detectable DNA, RNA and protein traces. |
| Purification Method | S-type LPS was isolated by the hot phenol-water method. Semi-purified LPS was subjected to further re-extraction cycles and ultracentrifugation steps, extensively electro dialysed before converted to its uniform sodium salt form to yield TLRpure™ LPS. |
| Sterility | Filter method: according to Ph. Eur. 9. Passed according to specification: <ul style="list-style-type: none"> • No growth in Thioglycolate medium at 30-35°C after 14 days. • No growth in Soybean Casein Digest Broth (TSB) at 20-25°C after 14 days. |
| Endotoxin Content | Bacterial Endotoxin Test (kinetic turbidimetric LAL method) according to Ph. Eur. 9. Endotoxin Content: >5,000,000 [EU/ml]. |
| Appearance | Colourless, clear, aqueous solution |
| Handling | Keep sterile. Prepare aliquots or working dilutions from pre-warmed (~40°C) LPS stock solution just prior to use. Ready-made solution is cell culture-grade. To yield a 100µg/ml (100x) stock solution, add 100µl of LPS to 900µl endotoxin-free and sterile ddWater (Cat. No.: IAX-900-002), or 0.9% NaCl Solution (Cat. No.: IAX-900-003) or PBS (Cat. No.: IAX-900-001) and mix well. |
| Activity | Optimal concentration is dependent upon cell type, species, desired activation and analysis: 0.01-1.0µg/ml <i>in vitro</i> and 5-15mg/kg <i>in vivo</i> in animal rodent models. Does not activate any TLR other than TLR4 as tested up to 1µg/ml in relevant cellular systems (mouse macrophages). |
| Shipping | Ambient |
| Storage | 2-8°C |
| Stability | 2 years after receipt (unopened and as supplied). Diluted solutions are stable for 12 hours at 2-8°C. |
| MSDS | Available on request |

Document No.: IAX-100-011 | **Version:** 1.8 | **Issue Date:** 24/01/2023

DISCLAIMER: THIS PRODUCT IS NOT INTENDED OR APPROVED FOR HUMAN, DIAGNOSTICS OR VETERINARY USE. USE OF THIS PRODUCT FOR HUMAN OR ANIMAL TESTING MAY BE EXTREMELY HAZARDOUS AND MAY RESULT IN DISEASE, SEVERE INJURY, OR DEATH. THIS PRODUCT IS FOR RESEARCH USE ONLY (RUO).

MATERIAL SAFETY DATA: This material should be considered hazardous until information to the contrary becomes available. Do not ingest, swallow, inhale or get into the blood stream. Do not get in eyes, on skin, or clothing. Wash thoroughly after handling. This information contains some, but not all, of the information required for the safe and proper use of this material. Access to this material must be restricted to personnel, who is appropriately experienced, qualified, competent and properly trained to use it. Material Safety Data Sheet is available upon request.

PRODUCT DATA SHEET

Page 2 / 4

LPS from *S. typhimurium* (S-form) TLRpure™ Sterile Solution

Cat. No.: IAX-100-011

Lot. No.:

S. typhimurium TLRpure™ LPS is a TLR4 specific agonist

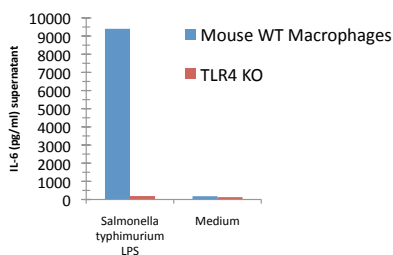


FIGURE:

Macrophages from wild-type (WT) TLR4 expressing or TLR4 deficient (TLR4 KO) mice were stimulated with 1 µg/ml TLRpure™ *S. typhimurium* S-LPS. Cell culture supernatants were analysed by ELISA for IL-6 after 24h. Optimal concentrations required for activation depend upon cell species (murine, human, others), cell culture conditions (FCS concentration), sampling time and cytokine analysis. Recommended range for S-type (wild-type) LPS: 0.01-1.0 µg/ml.

Product Description

- TLRpure™ LPS has been purified according to an optimized and proprietary extraction and purification protocol, but based upon the methods published by Galanos et al. (laboratory of Westphal and Lüderitz, Freiburg, Germany). TLRpure™ LPS lacks any detectable bacterial, (lipo-)protein, RNA or DNA or other TLR-stimulating activity due to its ultra-purified formulation. Its unique potency and purity are quality controlled using a physiological system of primary innate immune cells and a relevant biological cytokine expression read-out.
- Due to its amphipatic structure and strong tendency to form micelles, the generation of LPS, which is devoid of any non-TLR4 dependent immune modulatory activity, presents a major biochemical purification and analytical challenge. All immunological activity of TLRpure™ LPS is exclusively dependent upon the presence of TLR4 as determined by the use of the corresponding control cells, derived from TLR4 deficient (TLR4 knock-out, KO) mice.
- TLRpure™ LPS convenient ready-made stabilised solution makes it the reagent of choice for *in vitro* and *in vivo* experiments for superior reproducible and comparable results. These unique LPS preparations have been used in numerous publications since 1969. Compared to conventional (semipurified) LPS preparations, this low yield TLRpure™ LPS is produced on an industrial fermentation scale under precisely controlled growth conditions to yield large batch sizes, thus allowing custom formulations/packaging.

Product Specific References

- [1] *Induction of human granulocyte chemiluminescence by bacterial lipopolysaccharides.* Kapp A, Freudenberg M, Galanos C. *Infect. Immun.* (1987); 55:758
- [2] *Zanthoxylum zanthoxyloides inhibits lipopolysaccharide- and synthetic hemozoin-induced neuroinflammation in BV-2 microglia: roles of NF-κB transcription factor and NLRP3 inflammasome activation.* Ogunrinade FA, et al. *J. Pharm. and Pharmacol.* (2021); 73:118
- [3] *The synthesis and anti-inflammatory evaluation of 1,2,3-triazole linked isoflavone benzodiazepine hybrids.* Menghereş G, et al. *ARKIVOC* (2020); 7:1

Document No.: IAX-100-011 | Version: 1.8 | Issue Date: 24/01/2023

DISCLAIMER: THIS PRODUCT IS NOT INTENDED OR APPROVED FOR HUMAN, DIAGNOSTICS OR VETERINARY USE. USE OF THIS PRODUCT FOR HUMAN OR ANIMAL TESTING MAY BE EXTREMELY HAZARDOUS AND MAY RESULT IN DISEASE, SEVERE INJURY, OR DEATH. THIS PRODUCT IS FOR RESEARCH USE ONLY (RUO).

MATERIAL SAFETY DATA: This material should be considered hazardous until information to the contrary becomes available. Do not ingest, swallow, inhale or get into the blood stream.

Do not get in eyes, on skin, or clothing. Wash thoroughly after handling. This information contains some, but not all, of the information required for the safe and proper use of this material.

Access to this material must be restricted to personnel, who is appropriately experienced, qualified, competent and properly trained to use it. Material Safety Data Sheet is available upon request.

PRODUCT DATA SHEET

Page 3 / 4

LPS from *S. typhimurium* (S-form) TLRpure™ Sterile Solution

Cat. No.: IAX-100-011

Lot. No.:

General Information

- The innate immune response to lipopolysaccharide is essential for host defense against Gram-negative bacteria. In response to bacterial infection, the TLR4/MD-2 complex that is expressed on the surface of macrophages, monocytes, dendritic, and epithelial cells senses picomolar concentrations of endotoxic LPS and triggers the production of various pro-inflammatory mediators.
- Activation of cells by LPS is mediated on the plasma membrane by the Toll-like receptor 4 (TLR4), a member of the highly conserved protein family of TLRs, which are specialised in the recognition of microbial components. In mice, defects in TLR4 result in LPS unresponsiveness.
- For optimal interaction with LPS, TLR4 requires association with myeloid differentiation protein 2 (MD-2). According to current consensus activation of TLR4 is preceded by the transfer of LPS to membrane-bound (m) or soluble (s) CD14 by LPS-binding protein (LBP). This mechanism is believed to be generally true for LPS signaling. Re-form LPS and lipid A, but not S-form LPS, are capable of inducing TNF- α responses also in the absence of CD14. LPS, synthesized by most wild-type (WT) Gram-negative bacteria (S-form LPS), consists of three regions, the O-polysaccharide chain, which is made up of repeating oligosaccharide units, the core oligosaccharide and the lipid A, which harbors the endotoxic activity of the entire molecule. R-form LPS synthesized by the so-called rough (R) mutants of Gram-negative bacteria lacks the O-specific chain. Furthermore, the core-oligosaccharide may be present in different degrees of completion, depending on the class (Ra to Re) to which the mutant belongs. Notably, LPS from WT bacteria are always highly heterogeneous mixtures of S-form LPS molecules containing 1 to over 50 repeating oligosaccharide units and contain ubiquitously a varying proportion of R-form molecules lacking the O-specific chain. LPS are amphipathic molecules whose hydrophobicity decreases with increasing length of the sugar part.
- Based upon these differences, S- and R-form LPS show marked differences in the kinetics of their blood clearance and cellular uptake as well as in the ability to induce oxidative burst in human granulocytes and to activate the host complement system.
- In addition, LPS from extracellular bacteria which is either endocytosed or transfected into the cytosol of host cells or cytosolic LPS produced by intracellular bacteria is recognized by cytosolic proteases caspase-4/11 and hosts guanylate binding proteins that are involved in the assembly and activation of the NLRP3 inflammasome.
- One of the plausible mechanisms for LPS internalization and intracellular delivery involves LPS binding by high-mobility group box 1 (HMGB1) - an alarmin which can efficiently transport LPS into the cytoplasm through receptor for advanced glycation end products (RAGE)-mediated endocytosis. Through internalization of HMGB1-LPS complexes mediated by RAGE, HMGB1 induces destabilization of lysosomes for cytosolic LPS delivery.
- It has been also suggested that outer membrane vesicles (OMVs) — the naturally secreted products of Gram-negative bacteria — can function as cytosolic LPS delivery vehicles.

Document No.: IAX-100-011 | **Version:** 1.8 | **Issue Date:** 24/01/2023

DISCLAIMER: THIS PRODUCT IS NOT INTENDED OR APPROVED FOR HUMAN, DIAGNOSTICS OR VETERINARY USE. USE OF THIS PRODUCT FOR HUMAN OR ANIMAL TESTING MAY BE EXTREMELY HAZARDOUS AND MAY RESULT IN DISEASE, SEVERE INJURY, OR DEATH. THIS PRODUCT IS FOR RESEARCH USE ONLY (RUO).

MATERIAL SAFETY DATA: This material should be considered hazardous until information to the contrary becomes available. Do not ingest, swallow, inhale or get into the blood stream. Do not get in eyes, on skin, or clothing. Wash thoroughly after handling. This information contains some, but not all, of the information required for the safe and proper use of this material. Access to this material must be restricted to personnel, who is appropriately experienced, qualified, competent and properly trained to use it. Material Safety Data Sheet is available upon request.



PRODUCT DATA SHEET

Page 4 / 4

LPS from *S. typhimurium* (S-form) TLRpure™ Sterile Solution

Cat. No.: IAX-100-011

Lot. No.:

References

- [1] *Structural relationship of Salmonella O and R antigens.* Lüderitz O, Galanos C, et al. Ann. N.Y. Acad. Sci. (1966); 133:349
- [2] *Defective LPS signaling in C3H/HeJ and C57BL/10ScCr mice: mutations in Tlr4 gene.* Poltorak A, He X, Smirnova I, Liu MY, Van Huffel C, Du X, Birdwell D, Alejos E, Silva M, Galanos C, Freudenberg M, Ricciardi-Castagnoli P, Layton B, Beutler B. Science (1998); 282:2085
- [3] *CD14 is required for MyD88-independent LPS signaling.* Jiang Z, Georgel P, Du X, Shamel L, Sovath S, Mudd S, Huber M, Kalis C, Keck S, Galanos C, Freudenberg M, Beutler B. Nat. Immunol. (2005); 6:565
- [4] *Defective immunogenic cell death of HMGB1-deficient tumors: compensatory therapy with TLR4 agonists.* Yamazaki T, et al. Cell Death and Differentiation (2014); 21:69
- [5] *Lipopolysaccharide Recognition in the Crossroads of TLR4 and Caspase-4/11 Mediated Inflammatory Pathways.* Zamyatina A, Heine H. Front Immunol. (2020); 11: 585146

Document No.: IAX-100-011 | Version: 1.8 | Issue Date: 24/01/2023

DISCLAIMER: THIS PRODUCT IS NOT INTENDED OR APPROVED FOR HUMAN, DIAGNOSTICS OR VETERINARY USE. USE OF THIS PRODUCT FOR HUMAN OR ANIMAL TESTING MAY BE EXTREMELY HAZARDOUS AND MAY RESULT IN DISEASE, SEVERE INJURY, OR DEATH. THIS PRODUCT IS FOR RESEARCH USE ONLY (RUO).

MATERIAL SAFETY DATA: This material should be considered hazardous until information to the contrary becomes available. Do not ingest, swallow, inhale or get into the blood stream. Do not get in eyes, on skin, or clothing. Wash thoroughly after handling. This information contains some, but not all, of the information required for the safe and proper use of this material. Access to this material must be restricted to personnel, who is appropriately experienced, qualified, competent and properly trained to use it. Material Safety Data Sheet is available upon request.